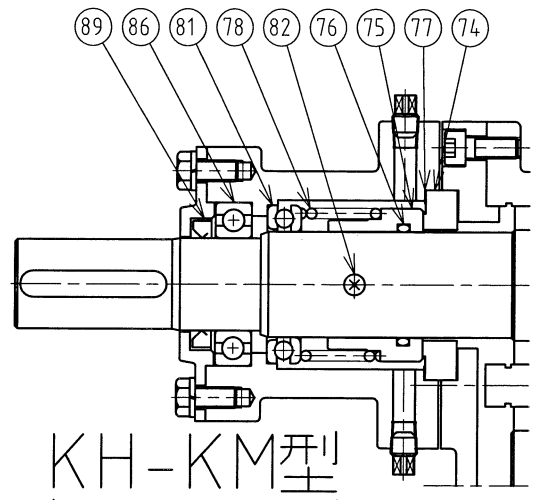
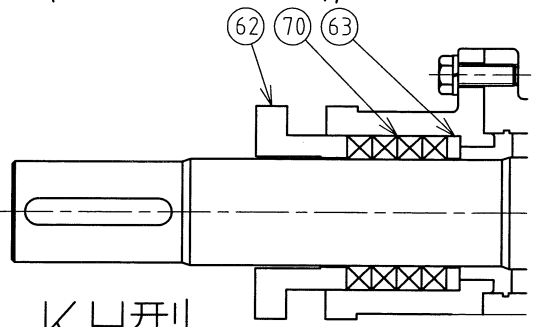


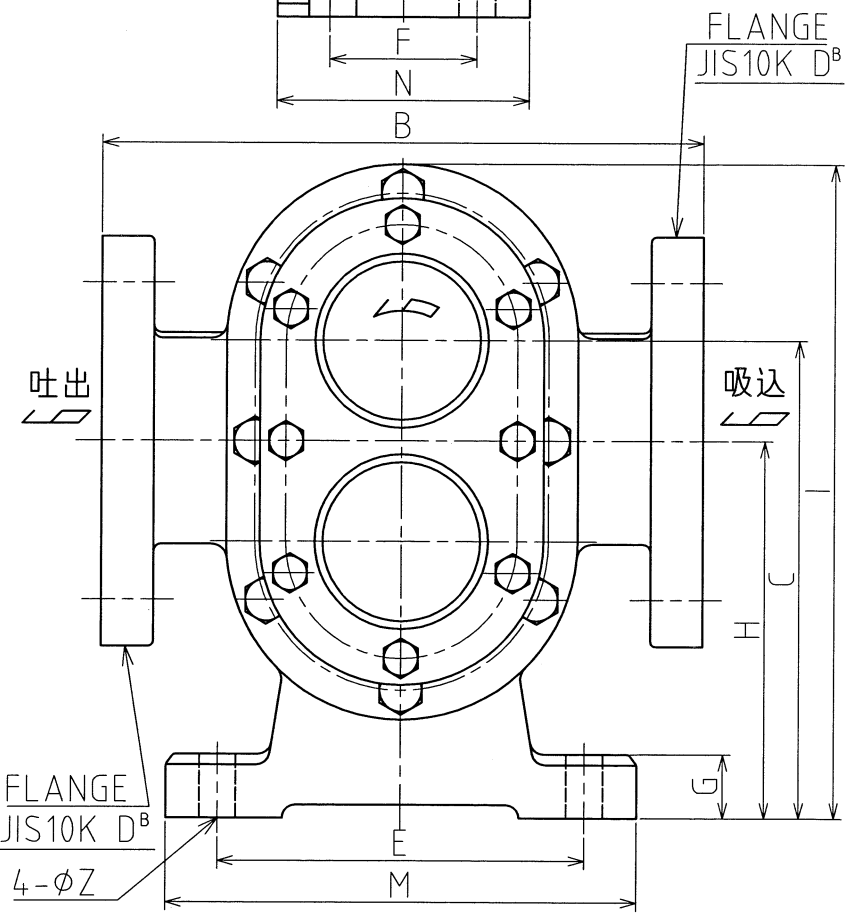
KH-M型
(インサイドメカシール式)



KH-KM型
(アウトサイドメカシール式)



KH型
(グラッドパッキン式)



70	GLAND PACKING	1SET	CARBONIZED FIBER	77	MECH. PACKING	2	PTFE	14	GEAR	2	S45C
63	GLAND P/K.SUPPORTER	1	S45C	76	MECH. O-RING	1	NBR	10	DRIVEN SHAFT	1	SCM435H#HARDENING
62	GLAND	1	FC250	75	MECH. ROTATION RING	1	SUS304/METC016C	9	DRIVE SHAFT	1	SCM435H#HARDENING
				74	MECH. SEAL RING	1	CARBON	5A	REAR COVER PACKING	1	PACKING PAPER
89	MECH. B. OIL SEAL	1	NBR					5	REAR COVER	1	FC250
88	MECH. B. STOP RING	1	SWP	65	GLAND COVER	1	FC250	4	F.B. COVER	1	FC250
86	MECH. BALL BEARING	1	SUJ	61	GLAND CASE	1	FC250	2A	FRONT COVER PACKING	1	PACKING PAPER
82	MECH. COUPLER	1	SUS304	60	KEY	1	S45C	2	FRONT COVER	1	FC250
81	MECH. THRUST BEARING	1	SUJ					1A	CASE PACKING	2	PACKING PAPER
78	MECH. SPRING	1	SWP	18	SIDE PLATE METAL	4	BC6	1	CASE	1	FC250
No.	NAME	QUANT.	MATERIAL	No.	NAME	QUANT.	MATERIAL	No.	NAME	QUANT.	MATERIAL